

# SUPERMARKET DENSE ENDS

## SPECIFICATIONS

### **STANDARD HEIGHT:**

2600mm high overall (to top of Lightbox)

### **MODULE LENGTHS:**

1160mm (has 640mm Centre Shelf)

1430mm (has 915mm Centre Shelf)

1720mm (has 1200mm Centre Shelf)

### **INFILL PANEL:**

Wire Mesh Infill Panel (75 x 25mm grid)

### **BASE SHELF:**

25mm Black Melamine with "T" Mould all round

### **CENTRE & SIDE SHELVES:** (for above base)

640 x 470mm Wire Centre Shelf - Chrome

915 x 470mm Wire Centre Shelf - Chrome

1200 x 470mm Steel Centre Shelf - P/coat

490 x 200mm Wire Side Shelf - Chrome

### **FINISH:**

Centre Frame & Side Frames are powder coat.  
Centre Shelves are Chrome except for the 1200mm centre shelf which is powder coated.  
Side Shelves are Chrome.

### **LIGHTING:**

The "Lightbox" is fitted with energy efficient lighting on a 3 pin plug that can be controlled by a side switch if required.

Note: Can be supplied without lighting

### **SIGNAGE GRAPHIC:**

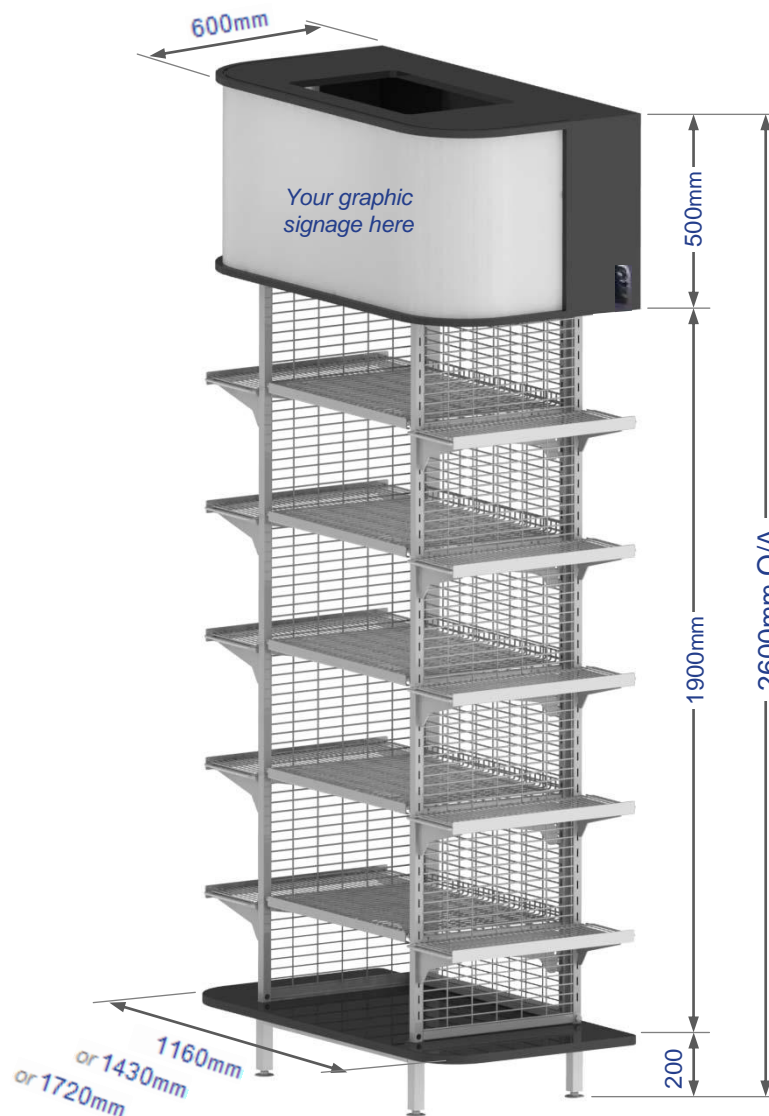
The Lightbox does not come standard as most retailers supply their own graphics.

### **MANUFACTURE TO ORDER:**

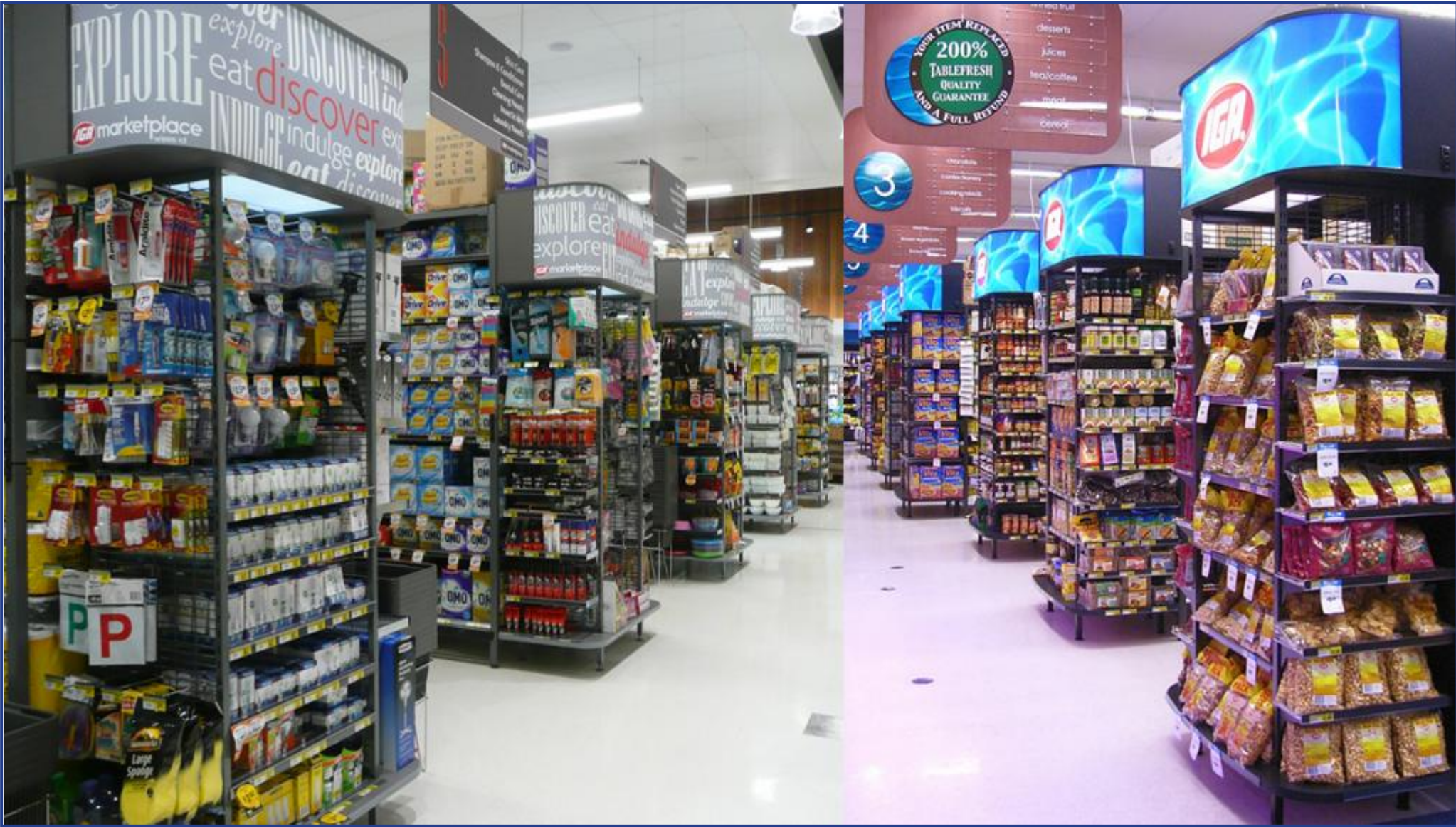
We can manufacture to your requirements with provision for manufacturing lead-time.

### **ADDITIONAL INFORMATION:**

Photos of various ends: see pages 2 & 3



# SUPERMARKET DENSE ENDS



### SYDNEY

205-231 Fairfield Road  
Yennora NSW 2161  
Ph: (02) 8724 4600 Fax: (02) 8724 4699  
Email: sales@gibsonshopfitters.com.au

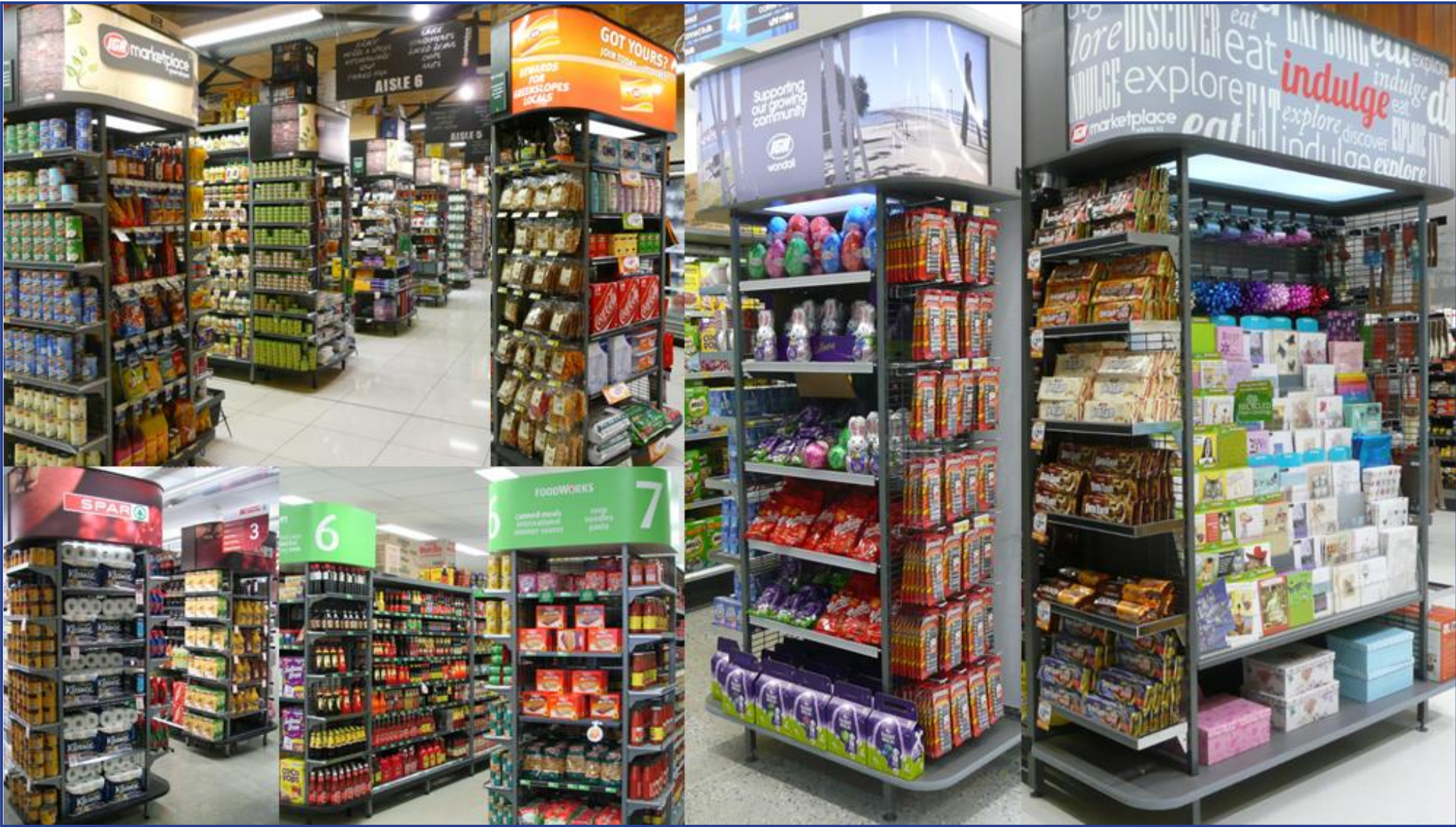
### BRISBANE

Unit 20b 10-20 Depot Street  
Banyo QLD 4014  
Ph: (07) 3266 9502 Fax: (07) 3266 4269  
Email: salesqld@gibsonshopfitters.com.au  
Website: www.gibsonshopfitters.com.au

### MELBOURNE

Suite 3, 203-205 Blackburn Road  
Mount Waverley VIC 3149  
Ph: (03) 9847 6822 Fax: (03) 9847 8868  
Email: salesvic@gibsonshopfitters.com.au

# SUPERMARKET DENSE ENDS



**SYDNEY**

205-231 Fairfield Road  
Yennora NSW 2161  
Ph: (02) 8724 4600 Fax: (02) 8724 4699  
Email: sales@gibsonshopfitters.com.au

**BRISBANE**

Unit 20b 10-20 Depot Street  
Banyo QLD 4014  
Ph: (07) 3266 9502 Fax: (07) 3266 4269  
Email: salesqld@gibsonshopfitters.com.au  
Website: www.gibsonshopfitters.com.au

**MELBOURNE**

Suite 3, 203-205 Blackburn Road  
Mount Waverley VIC 3149  
Ph: (03) 9847 6822 Fax: (03) 9847 8868  
Email: salesvic@gibsonshopfitters.com.au